

---

# *IntelliTrac X1*



## *Firmware Loader User Manual*

Version: 1.0

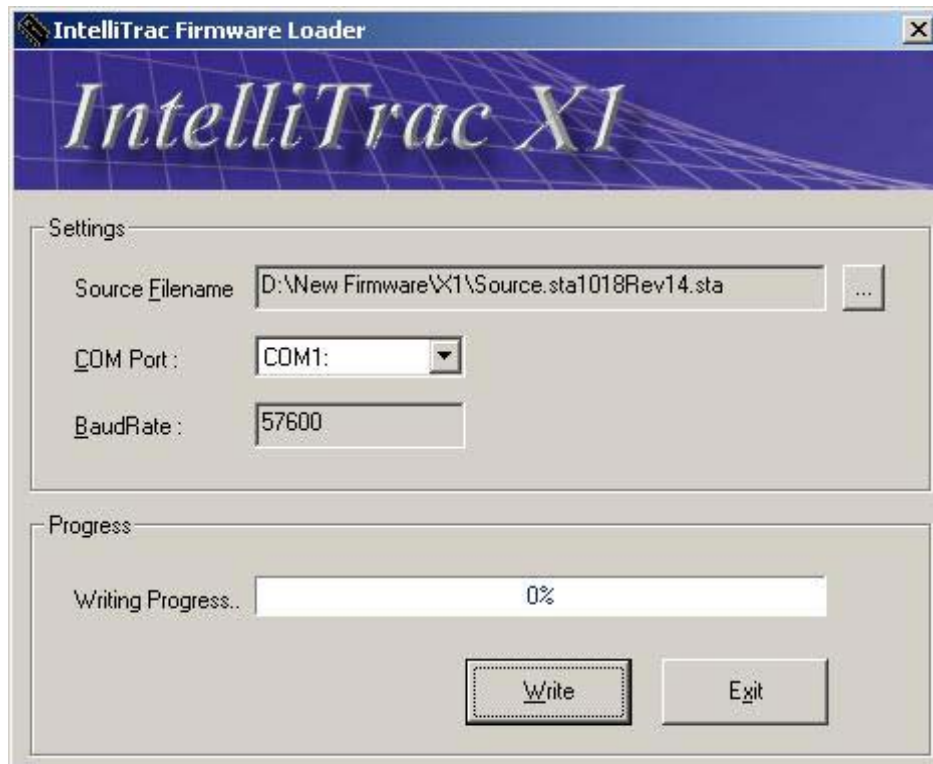
Date: Jan 2, 2006

Status: Preliminary

**Step1:** Power on the X1. The PWR LED should be solid green.

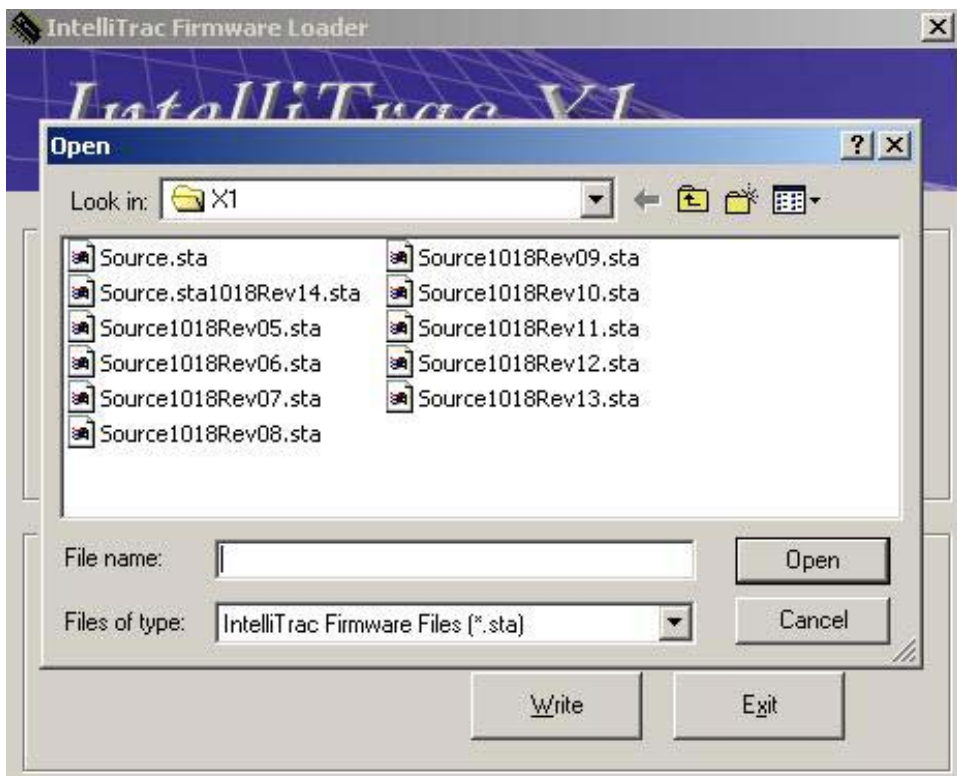
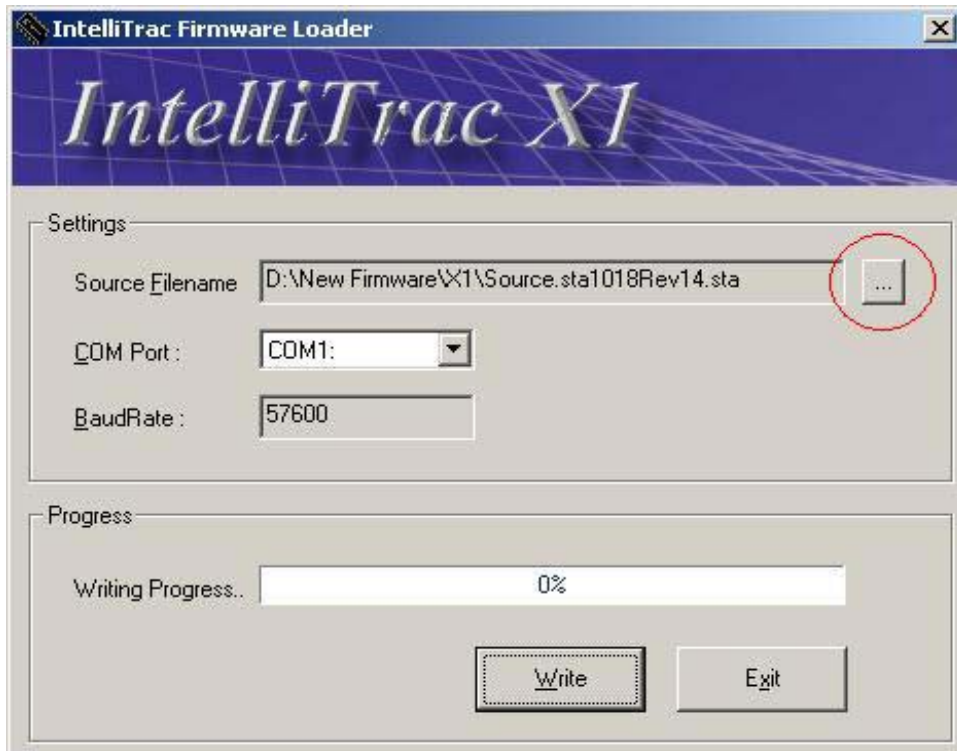
**Step 2:** Run the STLoader.exe program.

Please refer to the following figure:



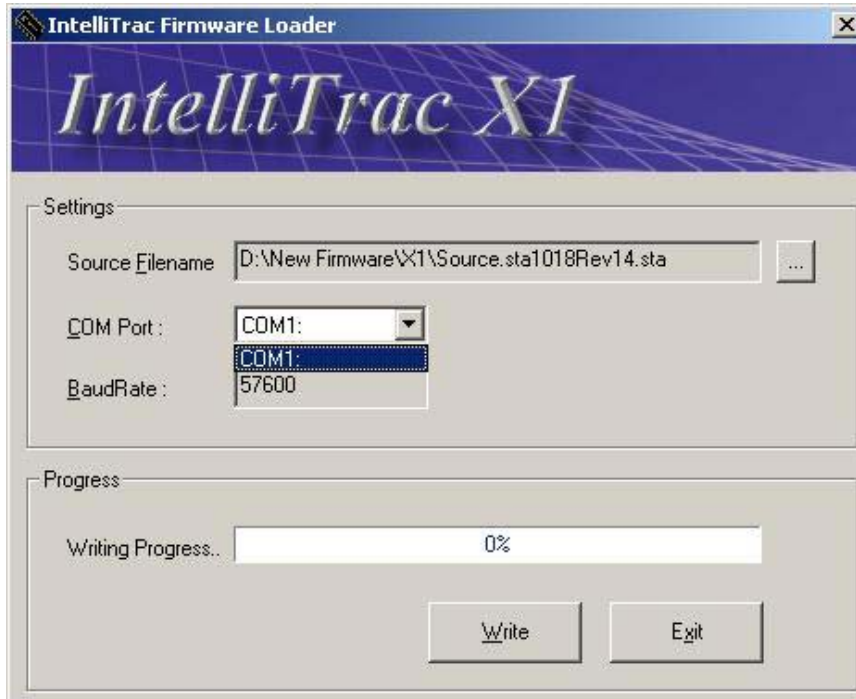
**Step 3:** Click the red-marked button to open the firmware data file which is provided by S&T

Please refer to the following figures:



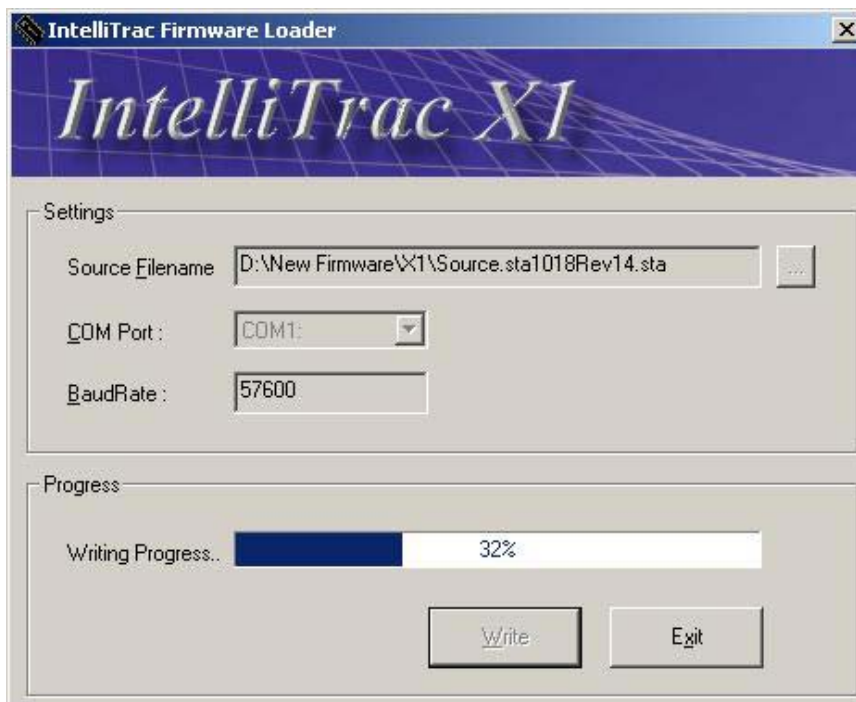
**Step 4:** select the appropriate “COM” port,

Please refer to the following figure:

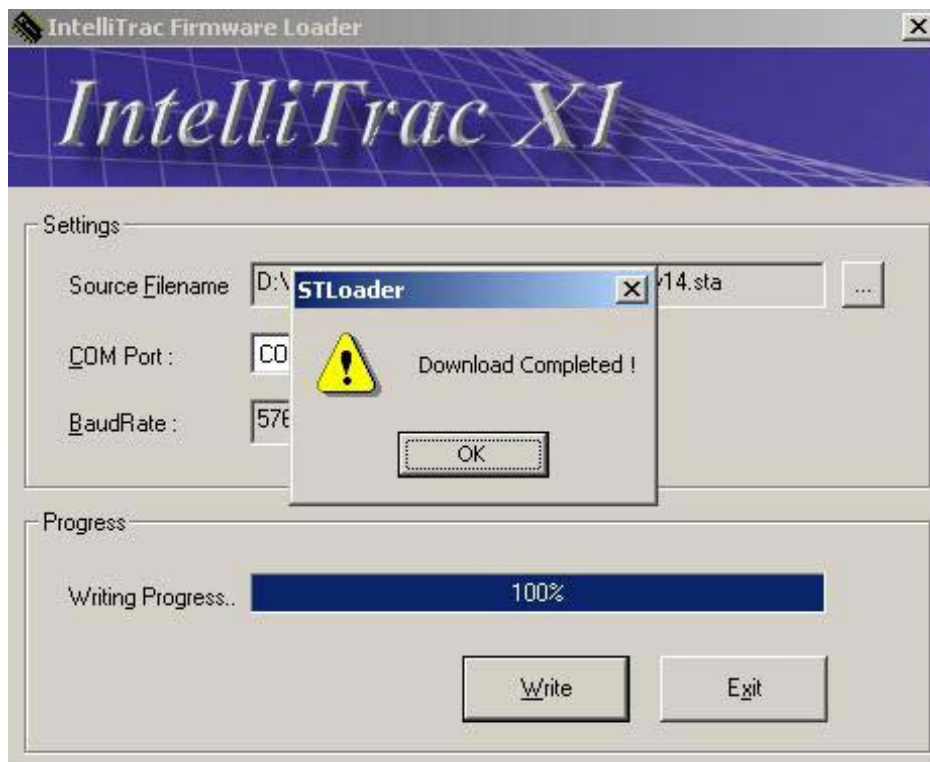


**Step 5:** Click “Write” button to start uploading procedures

Please refer to the following figure:



**Step 6:** When the process completes, the following dialog appears:



**Step 7:** Click "Exit" button to close the STLoader program

