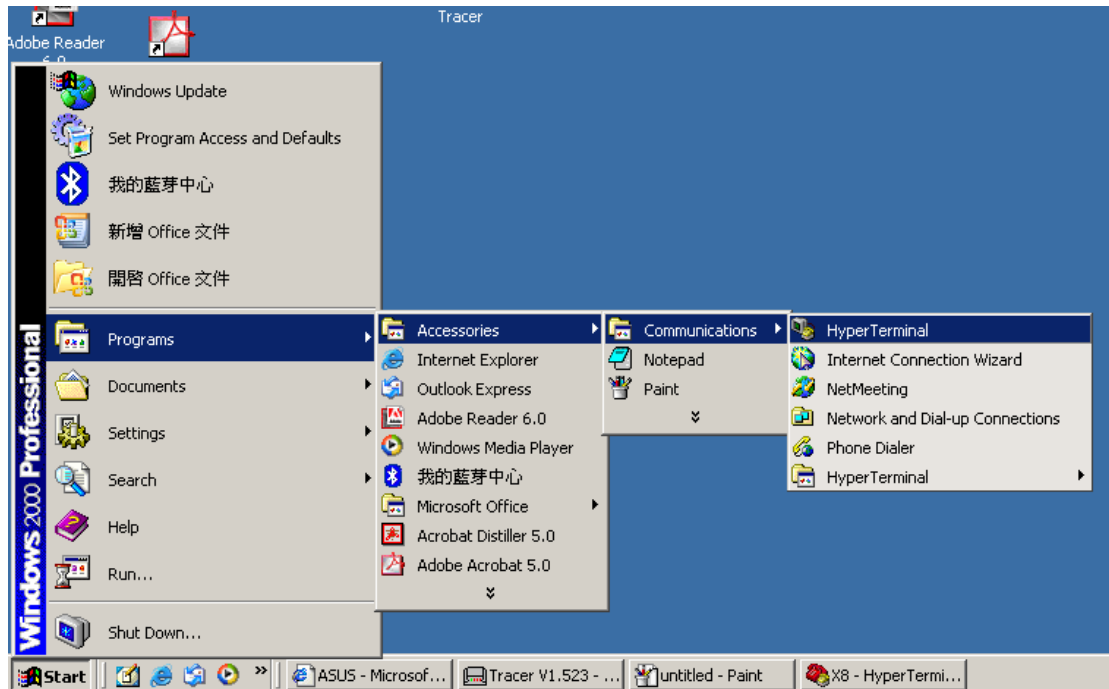


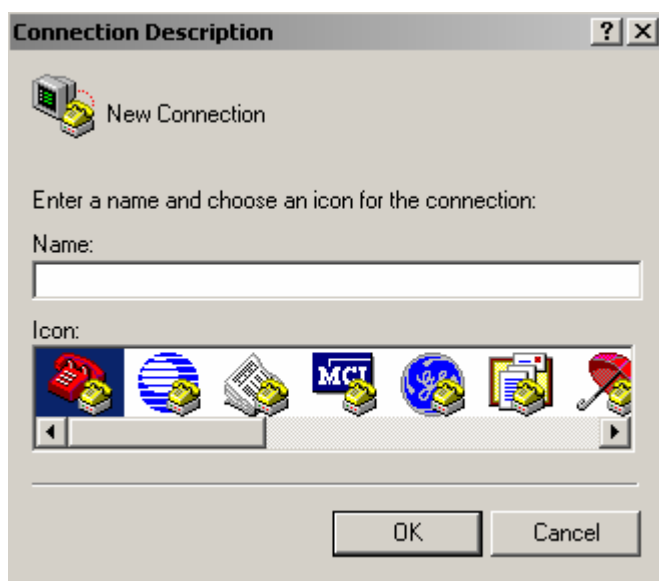
# Hyper Terminal Setup Manual

## Step 1:

Please click “Start” -> “Programs” -> “Accessories” -> “Communications” -> “Hyper Terminal”, please refer to the following figure (based on the Windows 2000 Professional Operating System):

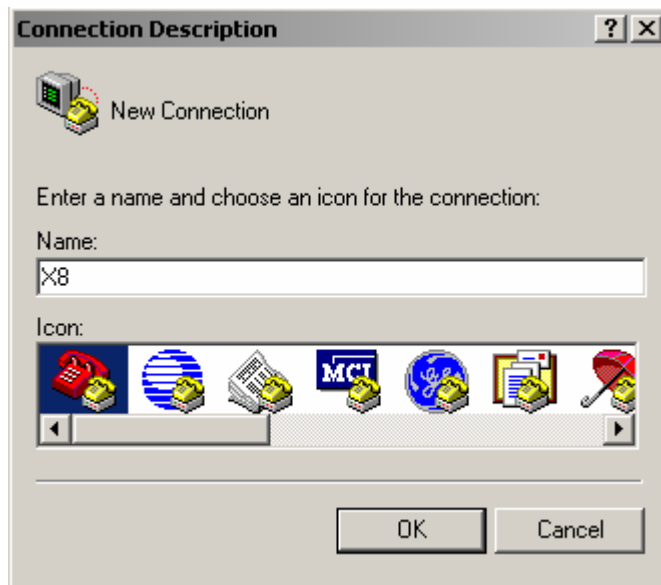


The following figure appears:



## **Step 2:**

Please give any name to it such as “X8” in the following example, then click [OK]:



## **Step 3:**

Please select the appropriate COM port number which connects to the X8 by RS232 cable then click [OK]. Please refer to the following figure:



**Step 4:**

Please setup the parameters as the following:

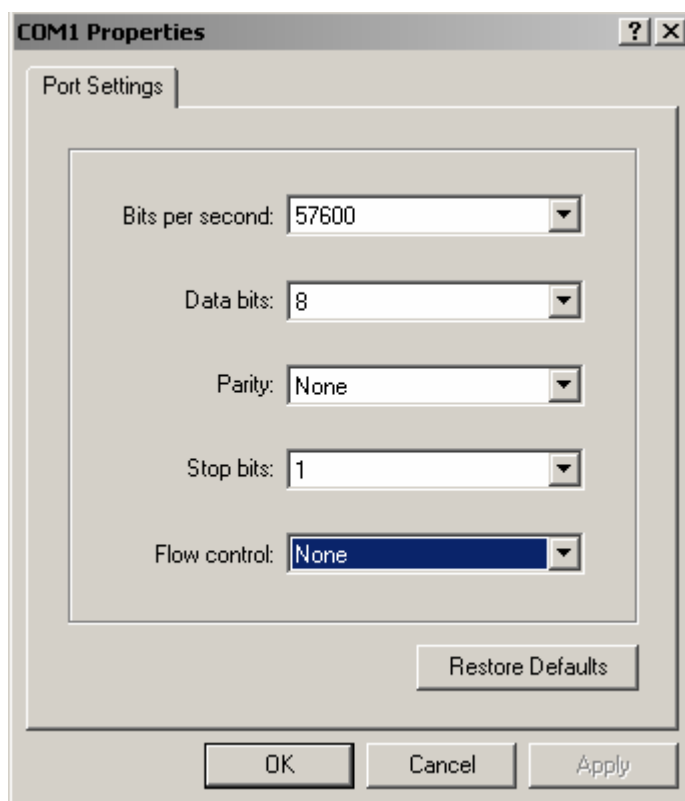
Bits per second: 57600bps (default setting of X8 RS232 connector)

Data bits: 8

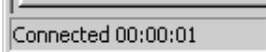
Parity: None

Stop bits: 1

Flow control: None

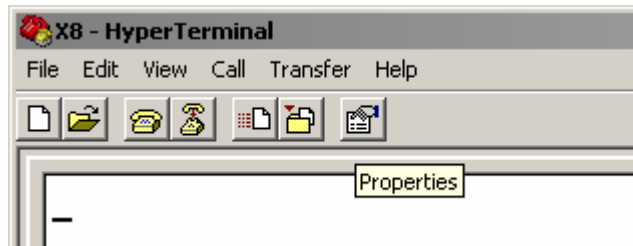


Then click [OK] button, it will bring the screen back to the main screen of Hyper

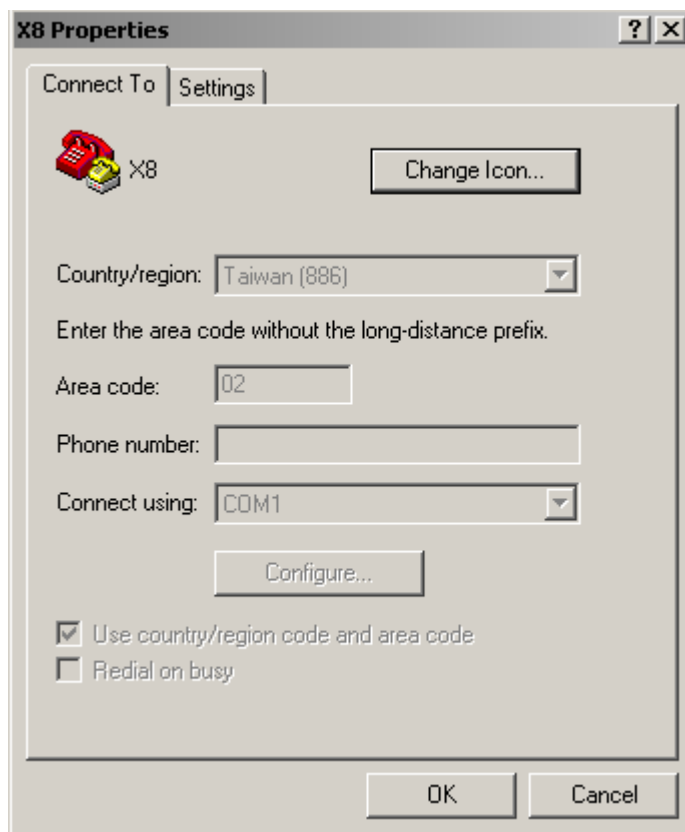
Terminal as following figure, the connection status  will be displayed on the lower-left corner

**Step 5:**

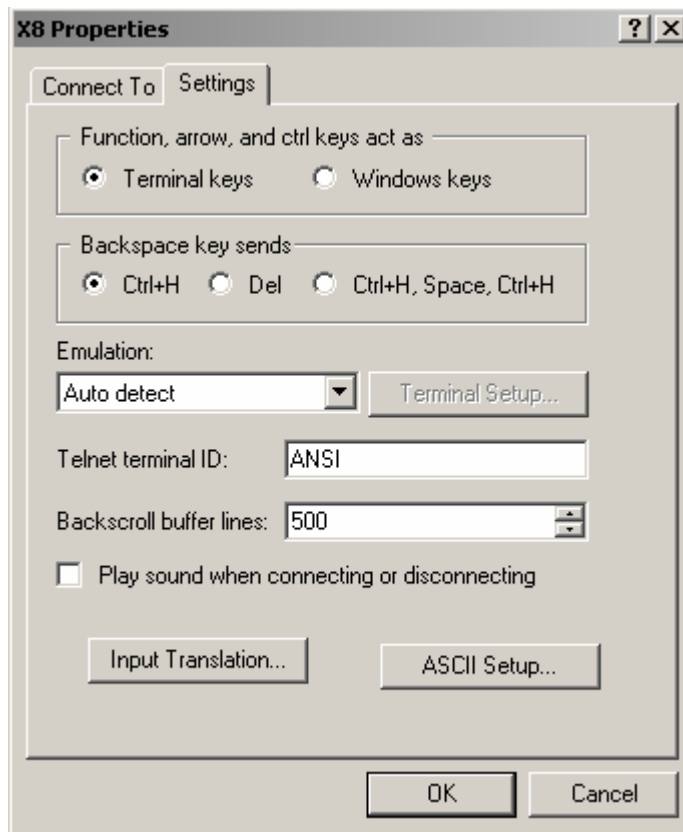
Please click the “Properties” on the toolbar menu.



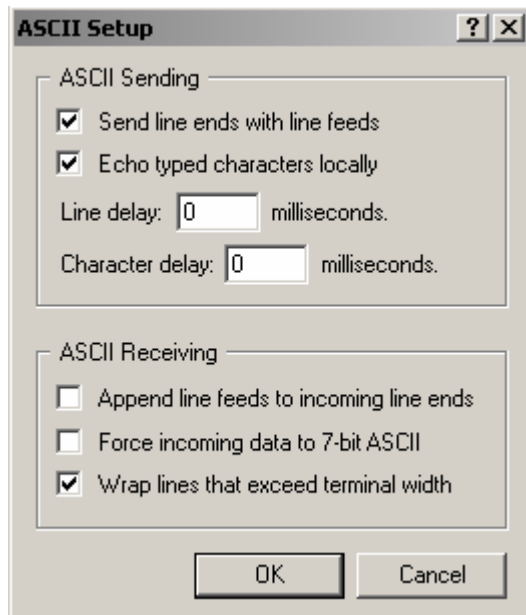
The following dialog appears:



Please click “Settings” tab, the following dialog appears:



Please click the [ASCII Setup] then the following dialog appears:



Please check the check box of “Send line ends with line feeds” and “Echo typed characters locally” then click [OK]. It brings the screen back to the main screen.

**Step 6:**

Please type the “\$ST” then press [Enter], if the communication has established correctly, the unit should return the message “\$ER:=0” , which means that the communication has been made.

