

INTELLITRAC X8

GPRS DIAL UP SETTING

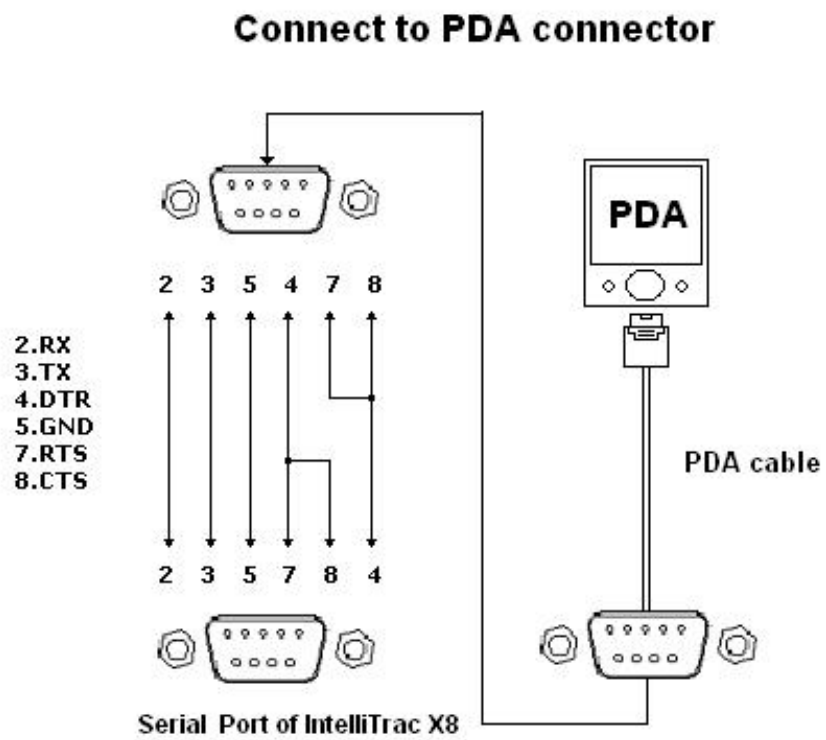


INDEX

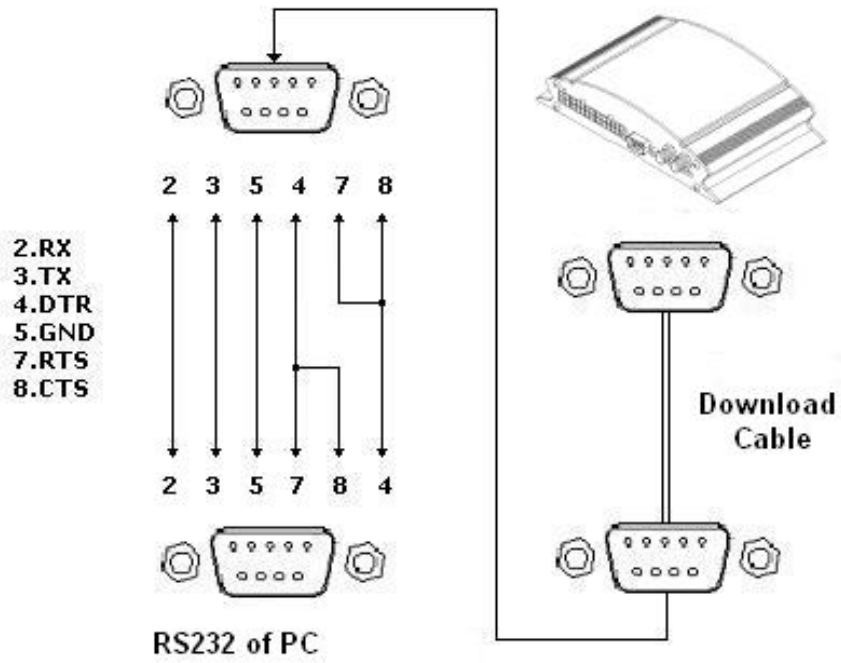
1.	HARDWARE REQUIREMENT:.....	2
2.	MAKING CONNECTION:.....	4

1. HARDWARE REQUIREMENT:

- **IntelliTrac X8 Unit (Firmware Version 1.304 or above)**
- PC/PDA (Operating System : Windows 98/2K/XP/CE)
- A SIM Card with GPRS function enabled.
- Data Transmitting Cable, please refer to following figures:



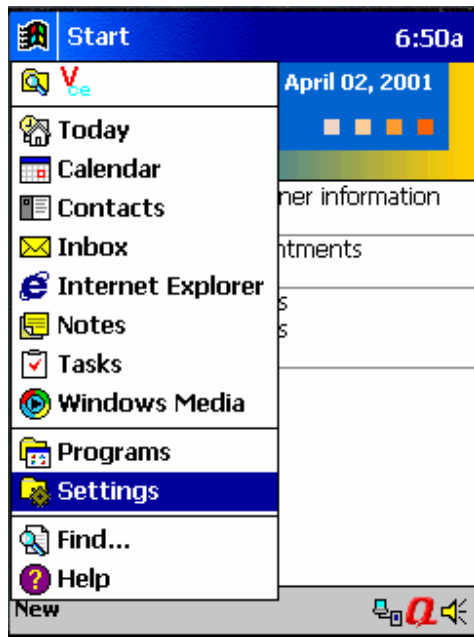
Connect to PC



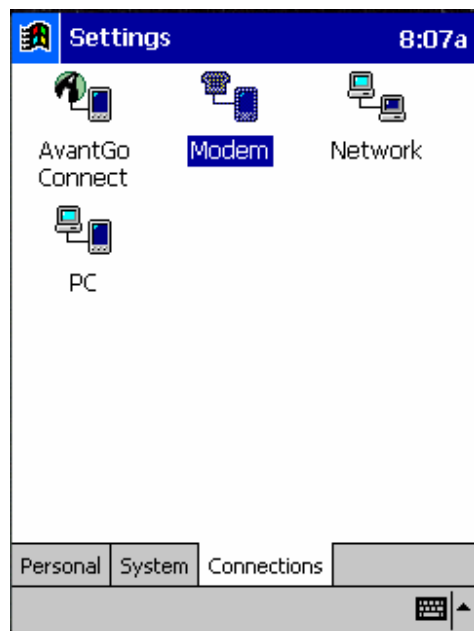
2. MAKING CONNECTION:

- For Windows CE operating system, please follow steps below:

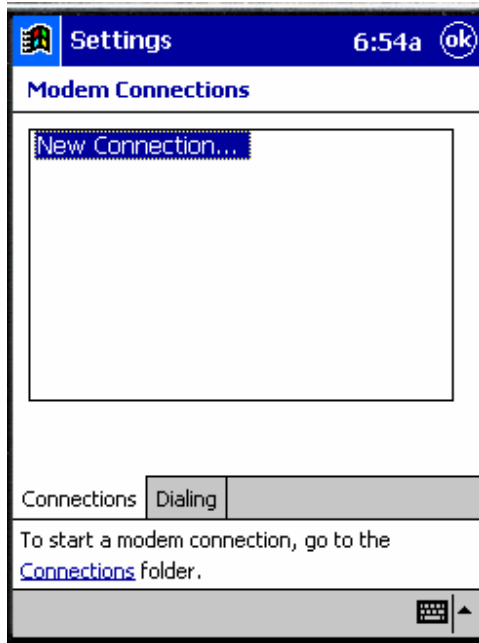
1. Click “**Start**” drop-down menu and select “**Settings**”



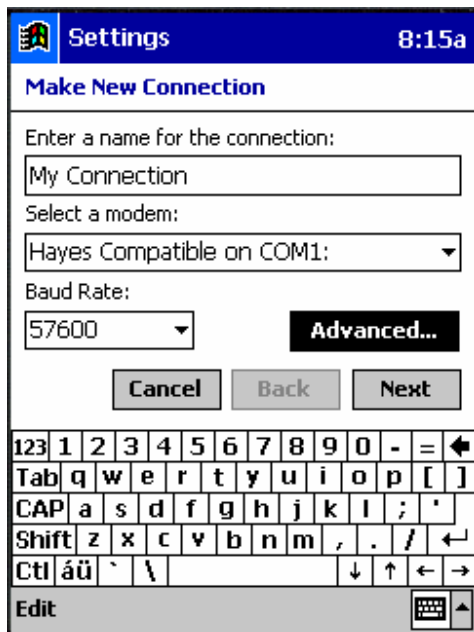
2. Click “**Connections**” tab and click “**Modem**”:



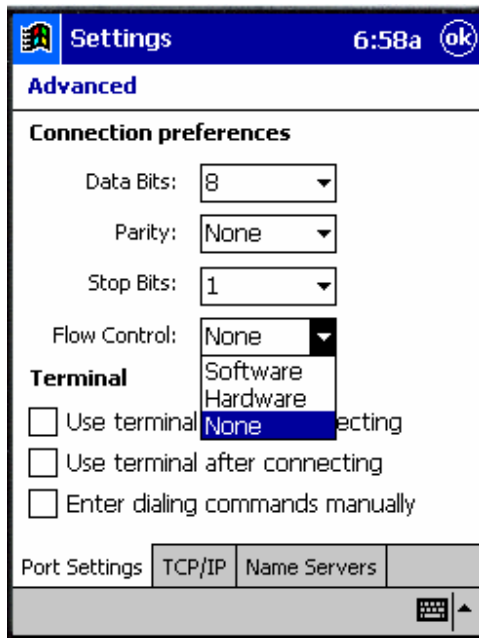
3. Click “**New Connection**”



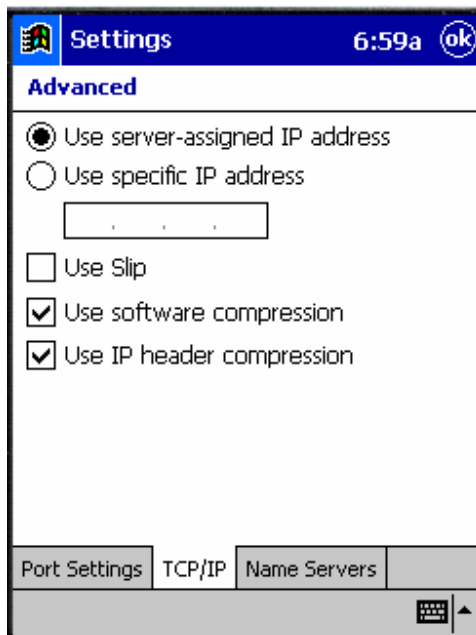
4. Please select “**Hayes Compatible on COM1**” and set “Baud rate” to **57600** bps then click “**Advanced**” tab.



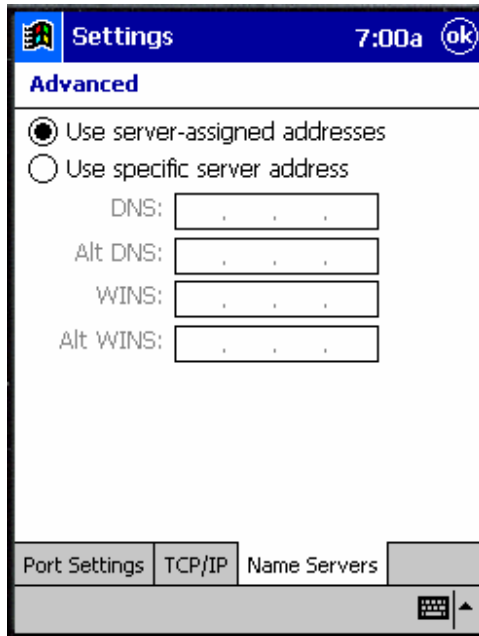
5. Set “**Flow Control**” to “**None**”:



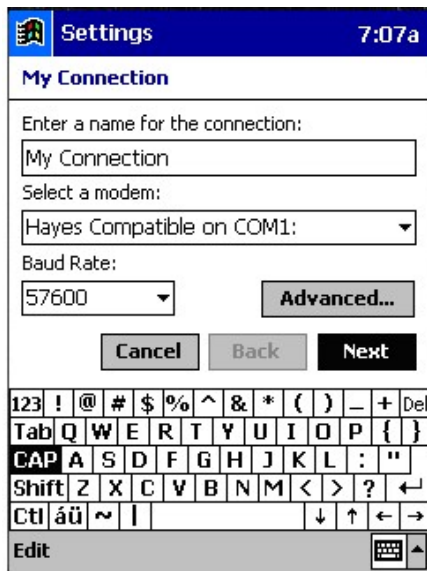
6. Click “**TCP/IP**” tab and select “**Use software compress**” and “**Use IP header compression**”



7. Click “**Name Servers**” and check “**Use server-assigned address**” and click  :



6. Click “**Next**”:



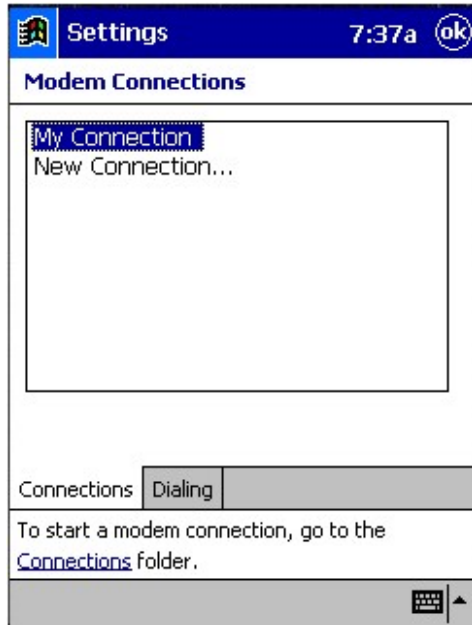
7. Enter “*99***1#” in the “Phone number” section and click “Next” button

The screenshot shows a mobile phone settings screen titled "Settings" with a time of 7:03a. The section is "My Connection". It contains three input fields: "Country code:" with the value "1", "Area code:" with the value "425", and "Phone number:" with the value "*99***1#". Below the fields are three buttons: "Cancel", "Back", and "Next". At the bottom of the screen is a numeric keypad and a keyboard icon.

9. Click “Finish” button:

The screenshot shows the same "Settings" screen at 7:27a. The "My Connection" section now includes a checked checkbox for "Cancel call if not connected within" with a value of "120" seconds. There is an unchecked checkbox for "Wait for dial tone before dialing" and a field for "Wait for credit card tone" with a value of "0" seconds. Below these is a field for "Extra dial-string modem commands:". At the bottom are three buttons: "Cancel", "Back", and "Finish". The "Finish" button is highlighted in black. At the very bottom, there is an "Edit" button with a red 'X' icon and a keyboard icon.

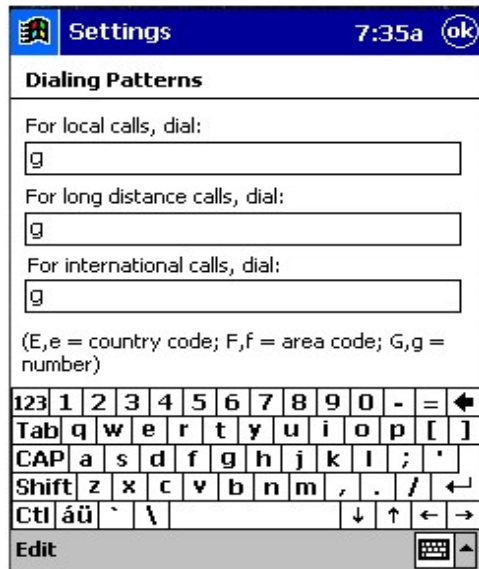
10. Click “**Dialing**” button:



11. Click “**Dialing Patterns**” tab,



12. Please enter letter “g” for each column as following and Click  button:



13. Click “**Connections**” tab:



14. Click “My connection”



15. Click “Connect...” to go online by using GPRS transparent mode of IntelliTrac X8 GSM modem.

